




Gemini, Claude, and ChatGPT

What Each Offers Teachers in 2026

Med Kharbach, PhD

		
ChatGPT	Gemini	Claude

A Practical Guide for Educators

educatorstechnology.com

Gemini, Claude, and ChatGPT

What Each Offers Teachers in 2026

I've been reviewing AI tools on Educators Technology since 2011, and the last year completely rewrote the playbook. ChatGPT, Gemini, and Claude all launched education-specific programs, gave teachers free access, and packed in features that would've sounded like science fiction just two years ago.

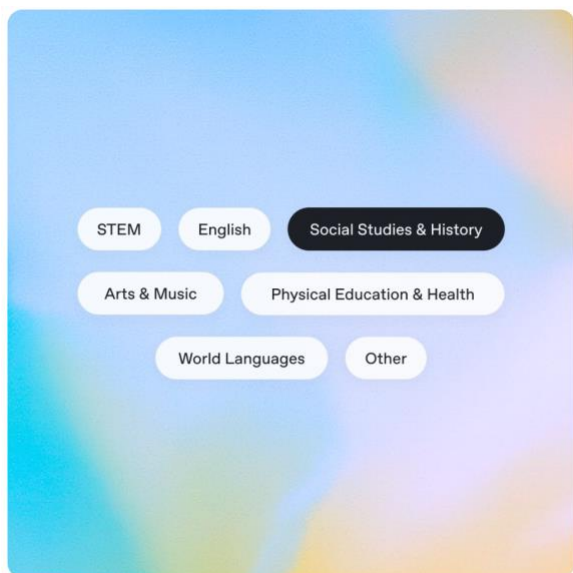
For this guide, I went through every major update from all three platforms, tested features across free and paid tiers, and followed what teachers in professional communities are reporting about daily classroom use. I also tracked partnerships, training programs, and the education-specific tools each company built.

What you'll find here is a practical, clear-eyed comparison of what each platform offers, how the features line up for core teaching tasks, what's free and what's behind a paywall, and where each platform fits best in your workflow. I've mixed narrative walkthroughs with comparison tables so you can read through or scan, depending on what you need.

ChatGPT: The All-Rounder

OpenAI made the biggest institutional move of the year. In November 2025, they launched [ChatGPT for Teachers](#), a free program that gives verified U.S. K-12 educators access to GPT-5.1 Auto with unlimited messages, web search, file uploads, voice mode, image generation, data analysis, memory, and 25 deep research queries per month. That package stays free through June 2027, and it's FERPA-compliant with education-grade security.

The platform's strongest card is breadth. ChatGPT can generate images with accurate text rendering (useful for classroom posters and visual materials), run advanced voice conversations with pronunciation feedback and multiple accents (a genuine tool for language teachers), and analyze uploaded spreadsheets for student performance tracking. The Canvas feature provides a side-by-side editing window where you build lesson materials and download them as PDFs or Word docs.



Source: <https://chatgpt.com/plans/k12-teachers/>

Custom GPTs let you create specialized assistants for specific tasks: a rubric generator, a vocabulary tutor, a feedback writer. You can share them within your school's workspace, and the GPT Store has thousands of education-specific options already built.

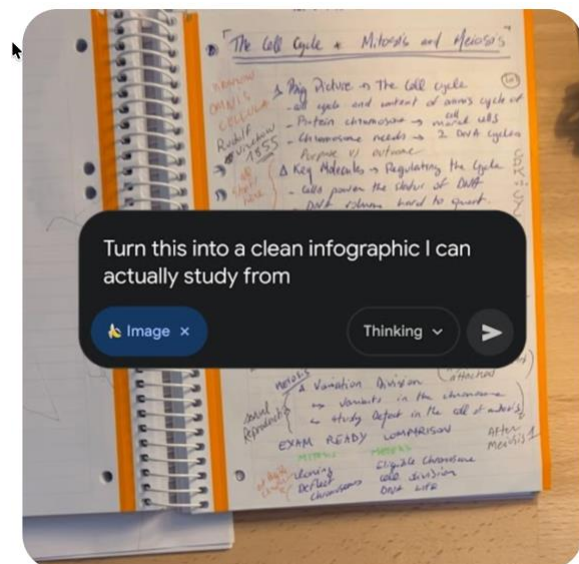
Deep Research is where the platform earns its keep for content prep. It browses hundreds of sources, synthesizes findings, and produces cited reports in 5 to 30 minutes. Study Mode (launched July 2025) uses Socratic questioning to guide students through problems with scaffolded hints and self-reflection prompts. The Canva integration means teachers can move from brainstorming content in ChatGPT to designing polished slides and worksheets in one connected workflow.

On the model side, you get GPT-4o for everyday tasks, the o3 reasoning model for complex problems and multi-step analysis, and GPT-5.1 Auto which picks the best model for whatever you're working on. The reasoning model is particularly useful for STEM teachers who need step-by-step breakdowns of math proofs, scientific analysis, or coding problems.

OpenAI partnered with Common Sense Media for free teacher training courses and invested \$10 million over five years with the American Federation of Teachers to support AI literacy across 400,000 educators.

Google Gemini: The Classroom Native

Google took a different path. Their strength isn't any single feature; it's how deeply Gemini is built into the tools schools already use every day. If your school runs on Google Workspace, Gemini is there inside Classroom, Docs, Slides, Sheets, Gmail, Meet, and Forms with no extra accounts or logins needed. And it's free for all Workspace for Education users.

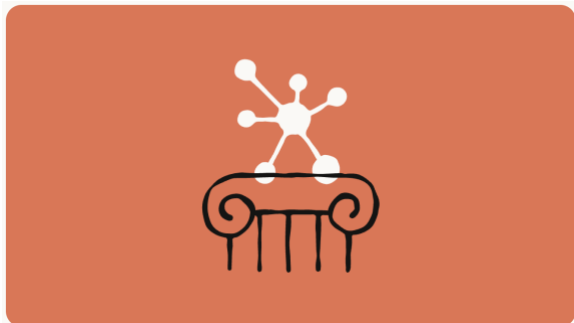


Source: <https://gemini.google/students/>

The Classroom integration is the most developed of any AI platform right now. Teachers can auto-generate quizzes from uploaded documents, create podcast-style audio lessons customized by grade level and learning objectives (launched January 2026), summarize student progress, and differentiate materials for multiple reading levels. Students can record and attach audio, video, and screen recordings directly to assignments.

NotebookLM might be the most practical tool Google has built for educators. You upload your own sources (textbook chapters, research articles, class handouts), and NotebookLM works only from those documents. It produces Audio Overviews (podcast-style summaries), video summaries, and infographics. You can assign notebooks directly to students through Classroom, and there's a public notebook library with OpenStax content.

Gems let teachers build custom AI tutors by uploading specific files as a knowledge base, then assign those tutors to students in Classroom. LearnLM, Google's education-specific AI model, is fine-tuned for teaching and shows measurable improvements in student problem-solving during tutoring sessions.



Source: <https://www.anthropic.com/news/introducing-claude-for-education>

The new Classroom homepage redesign (rolled out at BETT 2026) turns the main page into an actionable dashboard. Teachers see student engagement metrics, students see upcoming deadlines, and administrators get class insights at a glance. This kind of tight integration simply isn't available on the other two platforms.

Google also launched Workspace Studio, a no-code tool for building custom AI agents that automate admin tasks like organizing permission slips, triaging emails, and tracking attendance. Free Gemini Certified Educator certifications are available for K-12 teachers globally, and Google partnered with ISTE+ASCD to provide training for all 6 million U.S. educators.

Claude: The Thinking Partner

Anthropic took a narrower, more deliberate path. Claude for Education launched in April 2025, focused primarily on higher education, with institutional partnerships at Northeastern University (50,000 students across 13 global campuses), the London School of Economics, Champlain College, Syracuse, and USF Law. It integrates directly with Canvas LMS, and at participating schools, students and faculty get free access.

Claude's biggest differentiator is how it approaches learning. Learning Mode uses Socratic questioning to push students toward their own reasoning. It asks things like *"What evidence supports your conclusion?"* and *"How would you approach this problem differently?"* Research in educational psychology suggests that information discovered through guided questioning sticks 3 to 4 times longer than information that's passively received. This isn't a gimmick. It genuinely changes the interaction from "give me the answer" to "help me think."

Artifacts is the feature that generates the most excitement among educators. You describe what you want in plain language, and Claude builds it: interactive flashcard decks, quiz generators, data visualizations, educational games, HTML-based assessments. Everything renders live in a separate pane, you can iterate on it in real time, and version history keeps every draft accessible. Teachers with zero coding experience are creating classroom-ready interactive materials.

The 200,000-token context window is the largest of the three platforms, which means Claude can process entire textbooks, full course syllabi, or multiple research papers in a single conversation. Extended Thinking makes the reasoning process visible. Students can expand the thinking panel to see exactly how Claude broke down a chemistry problem, analyzed a historical argument, or approached a proof. For teachers, that visibility becomes a teaching tool on its own because it shows students what structured problem-solving actually looks like.

Cowork mode, launched in January 2026, turns Claude into a persistent desktop workspace. You can set up dedicated project folders, schedule recurring tasks, and keep custom instructions loaded between sessions. It's available on Pro and higher plans through the desktop app. For teachers who build weekly materials on a set schedule, the persistent workspace and task automation are a significant time-saver.

Feature-by-Feature Comparison

Feature	ChatGPT	Gemini	Claude
Free Teacher Access	Free for US K-12 (through June 2027)	Free for all Workspace for Ed users	Free at partner institutions
LMS Integration	Drive, M365, Slack, Canva connectors	Native in Classroom, Docs, Sheets, Meet, Gmail, Forms	Canvas LMS, Panopto, GitHub
Custom Assistants	Custom GPTs + GPT Store	Gems (assignable in Classroom)	Projects with instructions + files
Image Generation	GPT Image (accurate text)	Imagen (all ages)	Not available
Voice Mode	Advanced (accents, pronunciation)	Basic voice in app	Not available
Deep Research	Cited reports, 5-30 min	Multi-page; integrates Workspace	Advanced Research (internal + external)
Study / Learning	Study Mode (Socratic, quizzes)	Guided Learning + LearnLM	Learning Mode (Socratic)
Interactive Content	Canvas editor; PDF/Word export	Gemini Canvas (code + content)	Artifacts (live quizzes, games, tools)
Document Analysis	512MB/file; 80 files/3 hrs	NotebookLM (50 sources/notebook)	200K token context (largest)
Privacy	FERPA; no data training	COPPA, FERPA, HIPAA, FedRamp	FERPA, SOC 2, ISO 27001
Teacher Training	Common Sense Media; AFT \$10M	Free certification; ISTE+ASCD	AI Fluency (CC); Teach For All
Key Advantage	Broadest features; generous free tier	Deepest classroom integration	Strongest reasoning; largest context

Pricing at a Glance

Plan	ChatGPT	Gemini	Claude
Free / Education	Free (US K-12, through 2027)	Free (all Workspace for Ed)	Free (partner institutions)
Individual Paid	Plus \$20/mo	Google AI Pro \$20/mo	Pro \$20/mo
Premium	Pro \$200/mo	Ed Premium \$36/user	Max \$100–200/mo
Institutional	ChatGPT Edu (contract)	Included in Workspace for Ed	Enterprise (custom pricing)

★ Tips for Getting Started

- 1. Match the AI to your ecosystem.** If your district runs on Google Workspace, Gemini is already there. If you have Canvas LMS, Claude integrates directly. ChatGPT connects to both Google Drive and Microsoft 365.
- 2. Test all three free tiers first.** All three platforms offer free access for educators. ChatGPT for Teachers (US K-12), Gemini for Education (any Workspace school), and Claude for Education (partner institutions) are all zero-cost entry points.
- 3. Build a custom assistant for your most repeated task.** ChatGPT has Custom GPTs, Gemini has Gems, Claude has Projects. Pick the task you do most often (lesson planning, feedback, quiz creation) and set up a reusable assistant with your materials loaded in.
- 4. Use the right tool for the right job.** Try Claude for long document analysis and nuanced feedback. ChatGPT works best for quick content generation and image creation. If your school runs Google Workspace, Gemini is the natural fit.
- 5. Try research features for unit planning.** All three now offer deep research tools. Feed them your unit objectives and let them compile relevant resources, current articles, and cross-curricular connections.
- 6. Test study modes before recommending them.** ChatGPT's Study Mode, Gemini's Guided Learning, and Claude's Learning Mode all use Socratic approaches, but they feel different when you actually try them. Try each yourself before directing students to any of them.

7. Check your school's privacy requirements. All three offer FERPA compliance, but the specifics differ. ChatGPT and Gemini have broader institutional coverage; Claude's protections come through institutional partnerships.

Final Thoughts

No single platform wins across the board. ChatGPT brings the broadest feature set and the most generous free tier for U.S. K-12 teachers. Gemini has the deepest integration with the tools most schools already depend on. Claude offers the most thoughtful approach to student learning and the strongest long-document analysis.

The smartest move is to test all three, find where each one fits your specific workflow, and use them in combination where it makes sense. The days of picking one AI tool and sticking with it are over.