

AI Literacy for Students

A Practical Guide



Prepared by Med Kharbach, PhD
www.educatorstechnology.com

Based on EDUCAUSE's AI Literacy in Teaching and Learning: A Durable Framework for Higher Education

What is AI Literacy for Students?

"Students must understand, critically evaluate, and ethically apply AI technologies in academic contexts." (Kassorla et al., 2024)

What is AI Literacy in Teaching & learning?

"AI Literacy in Teaching and Learning (ALTL) involves understanding the fundamentals of how AI works; critically evaluating the application of AI tools in teaching, scholarship, and the management of educational priorities; and maintaining vigilance in evaluating tools and techniques to protect against bias, misuse, and misapplication of these powerful models. ALTL also demands a commitment to ethical usage, ensuring that AI tools are applied transparently and responsibly, with an awareness of their societal impacts." (Kassorla et al., 2024)

Core Competencies

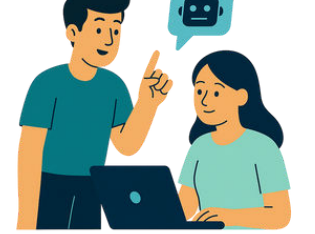
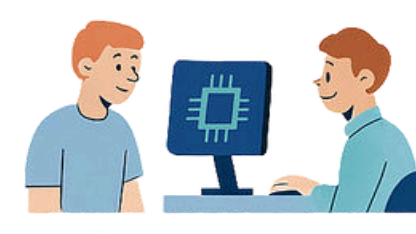
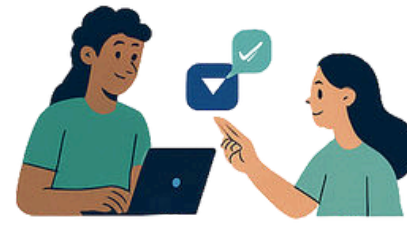
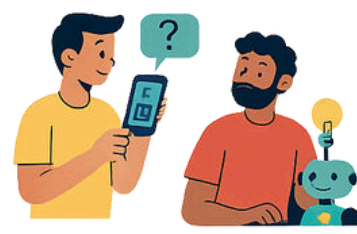
(Kassorla et al., 2024)

Technical Understanding

Evaluative Skills

Practical Application

Ethical Considerations



Technical Understanding

Competency

Explanation

Fundamentals of AI

Students grasp ML, NLP, and neural nets and explain them in plain language with a course example.

Application of AI Tools

Students pick the right tool, write effective prompts, and note when and how AI was used.

Hands-On Experience

Students practice on real coursework, apply AI step by step, and separate tool output from their own work.

Evaluative Skills

Competency

Explanation

Critical Evaluation of AI Tools

Students verify claims, cross-check sources, and revise or discard weak outputs.

Assessment of AI Impact

Students reflect on how AI changed their process and results, naming gains and trade-offs.

Ethical Evaluation

Students weigh privacy, security, and bias, and justify when AI use is appropriate or limited.

Practical Application

Competency

Explanation

Integration into Learning

Students fold AI into routines with time limits, checkpoints, and disclosure.

Research Enhancement

Students use AI for analysis and literature scans and keep a reproducible log of prompts and tools.

Project-Based Learning

Students tackle real problems with AI, iterate with feedback, and show a human-in-the-loop workflow.

Ethical Considerations

Competency

Explanation

Responsible Use of AI

Students protect privacy, follow policy, and uphold academic integrity in AI-assisted work.

Development of Personal AI Policies

Students draft a brief personal AI policy and attach it to major submissions.

Vigilance in AI Application

Students stay transparent about AI's role, note risks/benefits, and adjust practices as tools evolve.

Source:

Kassorla, M., Georgieva, M., & Papini, A. (2024). AI literacy in teaching and learning: A durable framework for higher education. EDUCAUSE.
<https://www.educause.edu/content/2024/ai-literacy-in-teaching-and-learning/student-altl>